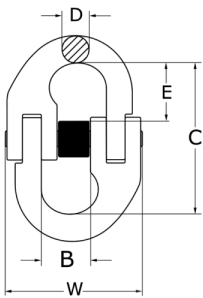


CHAIN CONNECTOR



Chain connectors are commonly used to connect Head Rings, Chain, Hooks and other lifting components for Chain Slings and a wide variety of other uses.

- Marked with Chain size, grade and branded with manufacture quality mark. □
- Made from G80 alloy steel with a safety factor of 4 to 1. □
- Test Certificates available upon request. □
- Conforms to AS3776.



CODE	CHAIN SIZE (mm)	WLL (tonne)		WEIGHT (k.g)		DIMENSIONS (mm)		
				B	C	D	E	W
254206	6	1.1	0.08	15	42	7	18	43
254208	7, 8	2	0.146	18	60.5	8.5	23.5	55
254210	10	3.2	0.3	25	68	11.5	27	69
254213	13	5.3	0.7	29	87	15	32	83
254216	16	8	1.3	34.5	108.4	19.8	41	102
254220	20	12.5	2.1	41	121.5	24	52.5	117
254222	22	15	3.2	48	141.5	26	62	143
254226	26	21.2	4.5	57.5	158	30	64	163
254232	32	31.5	9	67	205	37	86	199